

## Verification Details & Guidelines

---

**Applicants with no former registration or licensing through QCHP**

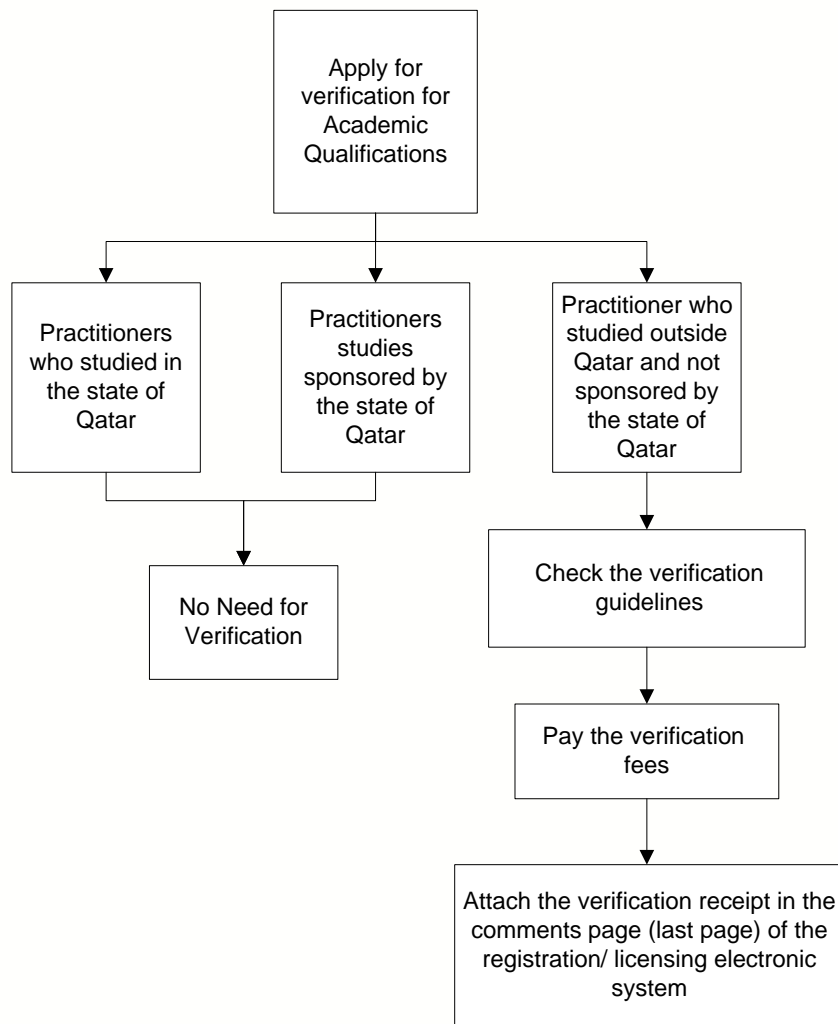
**1<sup>st</sup> Step:**

- Contact your focal point for guidance.

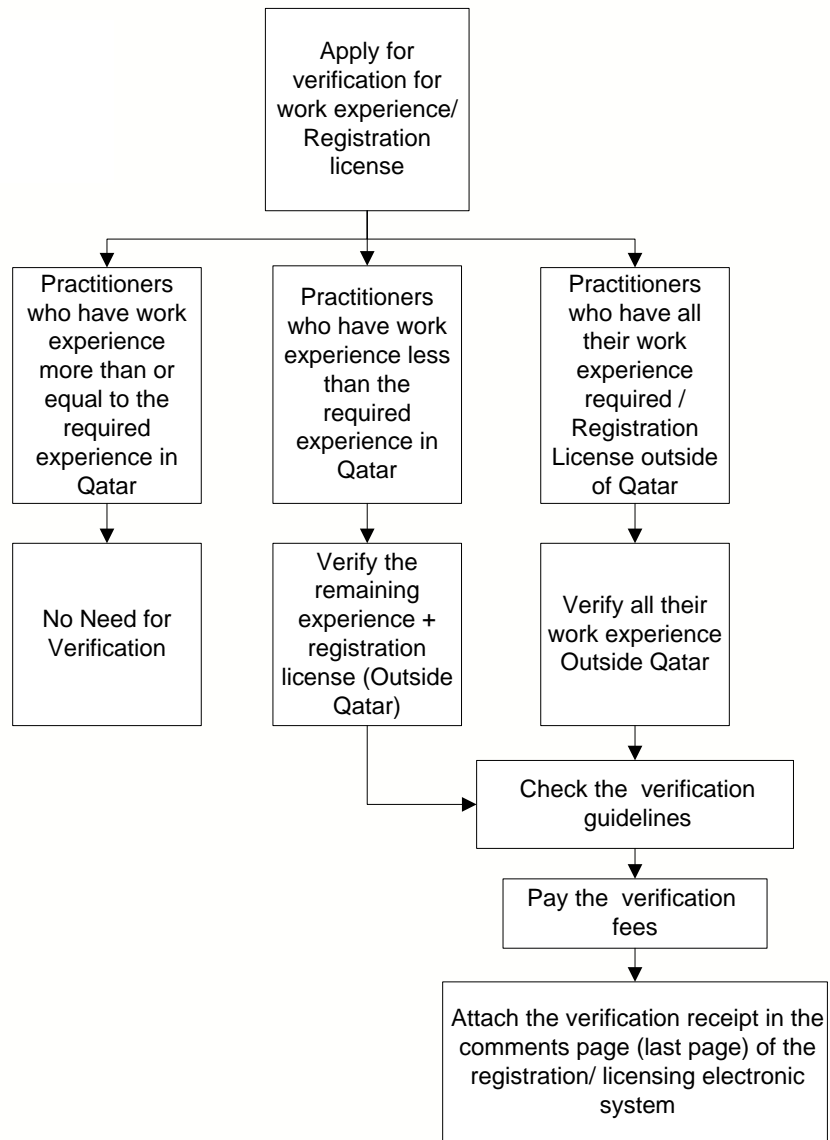
**2<sup>nd</sup> Step:**

- Apply for verification.

a. Academic Qualifications



b. Work Experience and Registration License



**Guidelines for the verification process**

There are currently 3 ways to apply for verification

1. **(RECOMMENDED)** Online application for verification process through the following link, <http://www.dfgsch.com>, which permits the applicant, to apply for online verification, e-payment and follow-up on the application.
2. Download the Data Flow application form from the SCH website by visiting <http://www.sch.gov.qa/sch/En/scontent.jsp?smenuId=53>, complete the form, then attach the required documents, a copy of the bank transfer fees and send them to the following email – [gatarmoh@dataflowgroup.com](mailto:gatarmoh@dataflowgroup.com).

**Bank account details:**

Account Name	DATAFLOW SERVICES FZ LLC
Bank Name	Emirates NBD
Bank Address	Dubai Media City Branch CNBC Building No 07 DMC P.O Box: 777, Dubai, UAE
IBAN & Bank Accounts	AE240260001024899133904 QR 1024899133904
SWIFT Code	EBILAEAD

3. Download the Data Flow application form from the SCH website by visiting <http://d13jic5e805ehy.cloudfront.net/app/media/1451>, complete the form, then attach the required documents, submit and pay the fees at the Data Flow counter, SCH premises.
- To follow up on applications submitted by e-mail or to the verification counter, SCH premises, please visit [https://dataflowbpm.com/sbm/Applicant/MOH\\_Applicant.jsp](https://dataflowbpm.com/sbm/Applicant/MOH_Applicant.jsp).

**Notes**

- Registration department/QCHP will receive the reports directly and contact the focal point/ applicant if needed.
- The Academic Qualifications and Experience provided in the State of Qatar are exempted from Data Flow Verification.
- Qatari healthcare practitioners who studied abroad are exempted from Data Flow verification, provided that their studies were sponsored by the State of Qatar.
- Practitioners who already have medical license and have never verified their academic qualification needs to do retrospective verification for their qualification – Refer to Circular (15) - Retrospective Verification of Academic Qualification.

**3rd Step:**

- Apply for registration/ evaluation through the Registration/ Licensing electronic system.